



cneto | CENTRO NAZIONALE
EDILIZIA E
TECNICA
OSPEDALIERA

Le nuove Case e Ospedali di Comunità e i sistemi integrati per la salute

PRESIDENTE: **Stefano Capolongo**

CAMOGLI (GE), 12-13 febbraio 2023

The UK Experience of Community Hospitals

Dr Helen Tucker
Community Hospitals Association



Presentation to Conference

National Hospital Construction Technology Center

Centro Nazionale Edilizia Tecnica Ospedaliera

13th February 2023



The UK experience of Community Hospitals

Esperienza UK degli Ospedali di Comunità

Dr Helen Tucker

President

Community Hospitals Association

Sharing & Learning

Italy – National Strategy
A new model for Italy
Investment in developing 400 community hospitals

UK – Local Developments
Long tradition of community hospitals
500 community hospitals

Community Hospitals Association

The National Voice for Community Hospitals



Dr David Seamark, Vice President CHA
Staff team at South Petherton Community Hospital

An Overview of CHA



- **500 Community Hospitals in the UK**
- **Members in UK & Internationally**
- **18 Committee Members**
- **150 CHA Innovation and Best Practice Awards in 22 years**
- **52 Years of the CHA**



CHA Key Roles

**Quality
Improvement**

Networking

Research

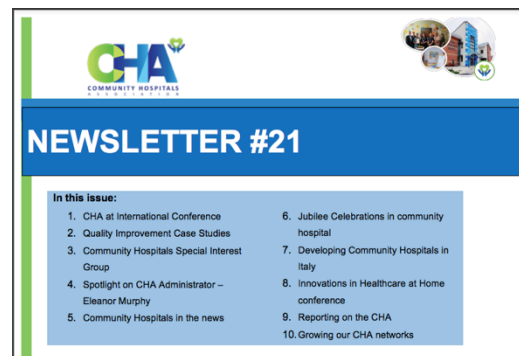


CHA Activities

Conferences



Newsletters



Online Discussion Groups



Visits to Community Hospitals



Website



Also Twitter, Facebook, LinkedIn and other social media

Why have Community Hospitals?

- **Local access to services**
- **Local facilities**
- **Local staff**
- **Provide care not requiring a General Hospital**
- **Service that is familiar and small in scale**
- **A Centre for the whole community**



150 years of Community Hospital Care

| Year | Community (Cottage) Hospitals in UK |
|------|---|
| 1859 | 1 |
| 1895 | 294 |
| 2022 | 500 |



Cranleigh Cottage Hospital
The First Cottage Hospital 1859



Nairn Community Hospital
An innovative development



Rye Hospital
Owned by local people

A Typical Community Hospital



The Vale Hospital, Gloucestershire, England

- ✓ **Small local hospital**
- ✓ **Rural**
- ✓ **Serving a local community**
- ✓ **Nurse-led**
- ✓ **Multi-disciplinary Teams**
- ✓ **Extended Primary Care**
- ✓ **Intermediate Care**

Role of Community Hospitals – Care Closer to Home

Intermediate care

Acute and sub-acute care - avoiding an acute hospital admission avoidance and support post-acute discharge

End of Life & Palliative Care

Providing a range of services

Rehabilitation

Support patients to optimise independence and provide local discharge planning

Services in community hospitals

- Inpatient Beds
- Outpatient Clinics
- Urgent Care
- Diagnostics & Treatment
- Therapies
- Health Promotion
- And others....



Patient Cohort for Bed-Based Care

Adults, and in particular older adults with frailty offering:

- **Rehabilitation**
- **Acute and Sub-acute care**
- **Palliative and End of Life Care**

Also Community Hospitals may have inpatient beds for:

- **Stroke Care**
- **Maternity**



Models of Community Hospitals in UK

Community Hospital

Classic community hospital with beds and community services – typically in rural areas

Community Ward in a General Hospital

Nurse-led ward for generalist not specialist care – rehabilitation and sub-acute – typically in urban areas

Intermediate Care/Rehabilitation Facility

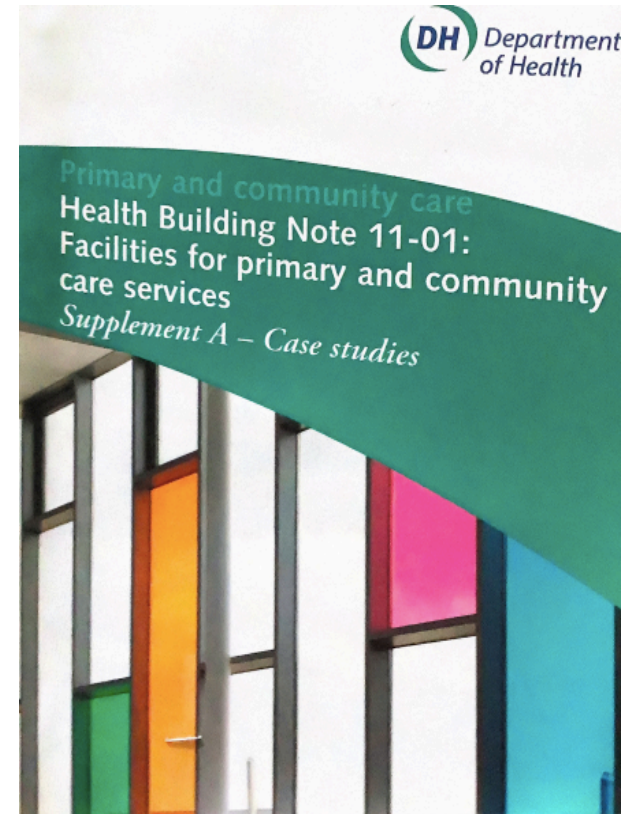
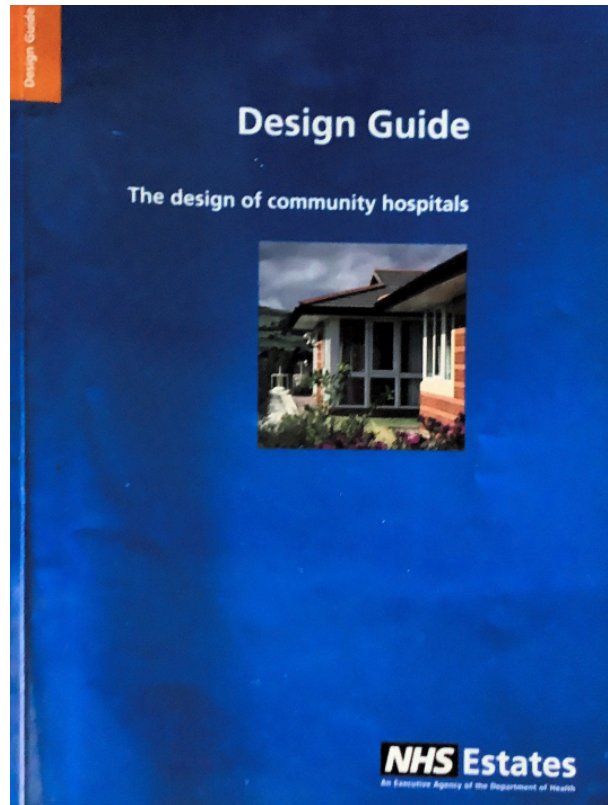
Post- discharge patients from General Hospital, focus on supporting patients to go home

Community Health and Wellbeing Centre

A Centre for health, social care, health promotion and welfare. Was a community hospital – now no beds.

Design of Community Hospitals

CHA Contributed



<https://www.england.nhs.uk/publication/facilities-for-primary-and-community-care-services-hbn-11-01/>

Provider Organisations of Community Hospital

| Model of Community Hospital | Typical Organisation Arrangement – 117 in UK |
|---------------------------------------|---|
| Community hospital with beds | NHS Trust (acute and or community) or Health Boards |
| Community ward in General Hospital | NHS Acute Trust |
| Intermediate Care/Rehabilitation Unit | NHS and Local Authority |
| Community Health and Wellbeing Centre | Partnerships – NHS, Local Authority, and Non-Governmental Organisations |

Staffing in Multi-Disciplinary Teams

- **Nurses – Advanced Nurse Practitioners & Registered Nurses**
- **Health Care Assistants**
- **Allied Health Professionals – i.e. physiotherapists, occupational therapists**

Supported by relevant practitioners/organisations including:

- **GP/Consultant Medical support**
 - **Community teams**
 - **Social workers**
 - **Community Pharmacists**
 - **NGO such as hospice**
-
- *Advanced Clinical Practitioners: Nurses, paramedics, therapists etc.*
 - *Nurse Consultants*

Views of Patients and Carers

***“Local hospital for local people, providing a local service by local staff.”
“Keep it local!”***

**I prefer my
local
community
hospital**

**Staff are
caring**

**Excellent
care**

Friendly

**I feel
listened to**

**I am
involved
in my care**

**Easy to get
to**

Empowering

**This is
“our”
hospital**



Community Hospital Research Programme

Efficiency

“Community hospital wards provide an effective and efficient model of care for older people recovering from illness.”

University of Leeds led by Professor John Young

International Learning

“Collaborative working is a key characteristic of community hospitals.”

University of Bournemouth & RAND led by Ellen Nolte

Value

“Community hospitals represent a significant community asset with a strong sense of community ownership.”

University of Birmingham led by Professor Jon Glasby

Funded by: National Institute for Health and Care Research (NIHR)

Sharing Evidence

“Community Hospitals are at the interface between primary care and specialist care”

Community hospitals and their services in the NHS: identifying transferable learning from international developments - scoping review, systematic review, country reports and case studies. Pitchforth E, Nolte E, Corbett J, Miani C, Winpenny E, van Teijlingen E, *et al. Health Serv Deliv Res* 2017;5(19)

“The Community Hospital is cost effective for post-acute in-patient rehabilitation”

"Post-acute care for older people in community hospitals--a cost-effectiveness analysis within a multi-centre randomised controlled trial." O'Reilly et al 2008 *Age and Ageing* 37(5):513-520.

“Care in Community Hospitals was consistent with greater independence”

"Effects of locality based community hospital care on independence in older people needing rehabilitation: randomised controlled trial." Green et al. 2005 *Br Med J* 331(7512):317-322.

“The Community Hospital service was welcomed by patients”

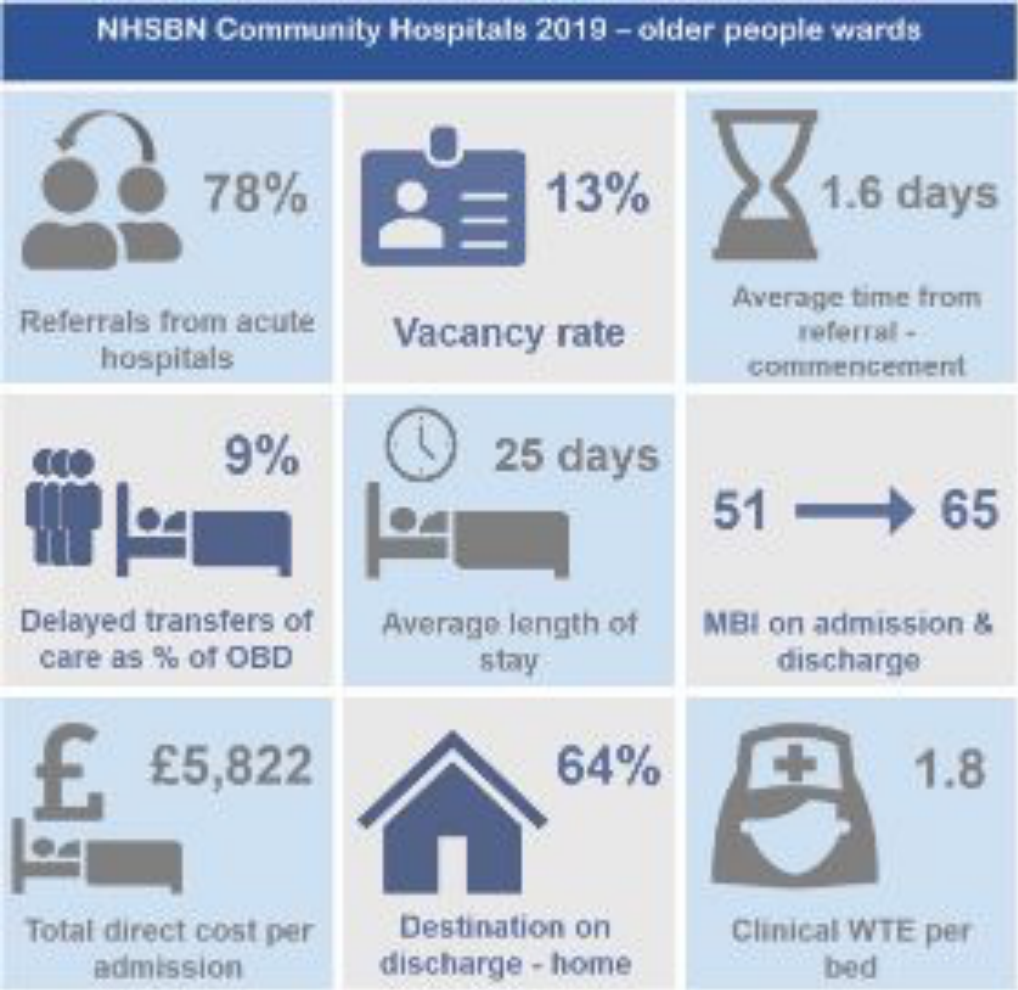
"The patient experience of community hospital - the process of care as a determinant of satisfaction." Small et al. 2007 *Journal of Evaluation in Clinical Practice*: 95-101.

NHS Benchmarking Network



Benchmarking Network

Home Who we are ▾ What we do ▾ Events News Contact



<https://www.nhsbenchmarking.nhs.uk/>



“The response of United Kingdom Community Hospitals to the COVID-19 Pandemic: an Appreciative Inquiry.”



**85 staff
interviewed**



**20 Organisations with
168 Community Hospitals**



31 case studies:
* **Changing Practice**
* **Supporting People**
* **Planning and Managing Change**

Thank you to our Funder: The Health Foundation, Quality Exchange AIMS ID 2447454

Features of Community Hospitals

Integrated

Resilient

Flexible

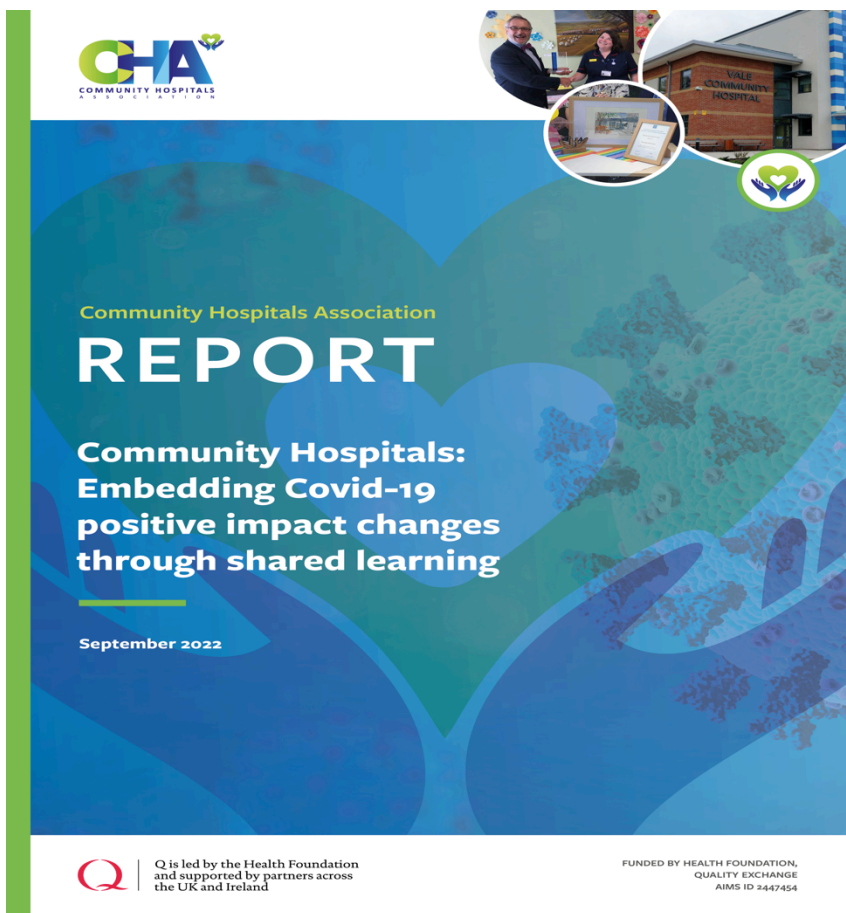
Responsive

Creative

Compassionate



Sharing Findings from the Study



BMJ Open Quality Latest content Archive

Home / Archive / Volume 11, Issue 4

Article Text

Original research

Response of UK community hospitals to the COVID-19 pandemic: an appreciative inquiry 

 David Anthony Seamark ¹, Evelyn Prodder ², Trish Jay ³, Emma Gibbard ⁴,  Helen Tucker ⁵

Correspondence to Dr David Anthony Seamark; david.seamark@nhs.net

 PDF

Citation Tools

Share

Abstract

Introduction The 500 community hospitals in the UK provide a range of services to their communities. The response of these small, mainly rural, hospitals to the COVID-19 pandemic has not yet been examined and so this study sought to address this gap.

<http://www.communityhospitals.org.uk/quality-improvement/reports.html>

Quote from Nurse Consultant

“Community hospitals are brimming with expertise often untapped!

The pandemic demonstrated the true place for them as a major team player in community care provision.

Let’s be brave in the development of these wonderful places.

Lets get it absolutely right for our communities.”

Our Learning

RECOMMENDATIONS

In order to make the most of our community hospitals we need to be:

- 1 Making Decisions Locally
- 2 Benefiting from Excellent Leadership
- 3 Recognising Community Hospitals as community assets
- 4 Looking after our staff

- ✓ **Keep it Local**
- ✓ **Involve the community**
- ✓ **Monitor impact on patients**
- ✓ **Evaluate the service**

You are Welcome!

Oxford Health
NHS Foundation Trust

Oxford Health Arts Partnership
Artscape  Creating with Care


Oxford Health
NHS Foundation Trust



Bicester Community Hospital



City Community Hospital



Witney Community Hospital



Didcot Community Hospital



Wallingford Community Hospital



Wantage Community Hospital



Abingdon Community Hospital

The CHA has arranged for managers and staff in NHS Trusts in the UK to link with Professor Giovanni Fattore and his team at University of Bocconi.

Thank you



Join the CHA <http://www.communityhospitals.org.uk/join-free-personal.html>

Join our Special Interest Group <https://q.health.org.uk/community/groups/community-hospitals/>

Email infocommunityhospitals@gmail.com

Website <http://www.communityhospitals.org.uk/>

Twitter @CommHospUK

Linkedin Community Hospitals Association

Facebook Community Hospitals Association

